

HOMES • 27 January 2019

# How Elnaz Namaki utilised the open-plan concept in this Chelsea Penthouse

*HvB Development and Elnaz Namaki Studio joined forces to literally shed light into this previously closed off penthouse*

BY JUMANA ABDEL-RAZZAQ



The residence as a whole underwent dramatic changes, with ceilings and doorways being raised to maximise volume in the space

**W**hen HvB Development and Elnaz Namaki Studio were approached to redevelop a Chelsea Penthouse – one that suffered from a lack of light despite its sweeping wrap-around terrace – the team set out to give the space an element of open-plan living.





From here, Namaki and her team embarked on a nine-month design and build programme that saw the implementation of a brand new layout for the home, one that improved the spatial layout and let in an abundance of natural light to create the utmost accessibility.

**[RELATED: Designer Elnaz Namaki set to make mark with Luuna collection](#)**



The brief for the interior design of this penthouse was to bring light into the building and incorporate a contemporary, yet mid-century feel. Here, Namaki chose a colour palette that contrasted tones of grey with pops of rich heritage colour in the furnishings and accessories. Spaces were framed by darker skirtings and doors, a technique that created a more spacious feel to the home.



**READ: This London apartment is steeped in Middle Eastern art and design**



The residence as a whole underwent dramatic changes, with ceilings and doorways being raised to maximise volume in the space. The new layout connected the lounge to the kitchen, removing the dining area for an exposed and open setting across the penthouse.

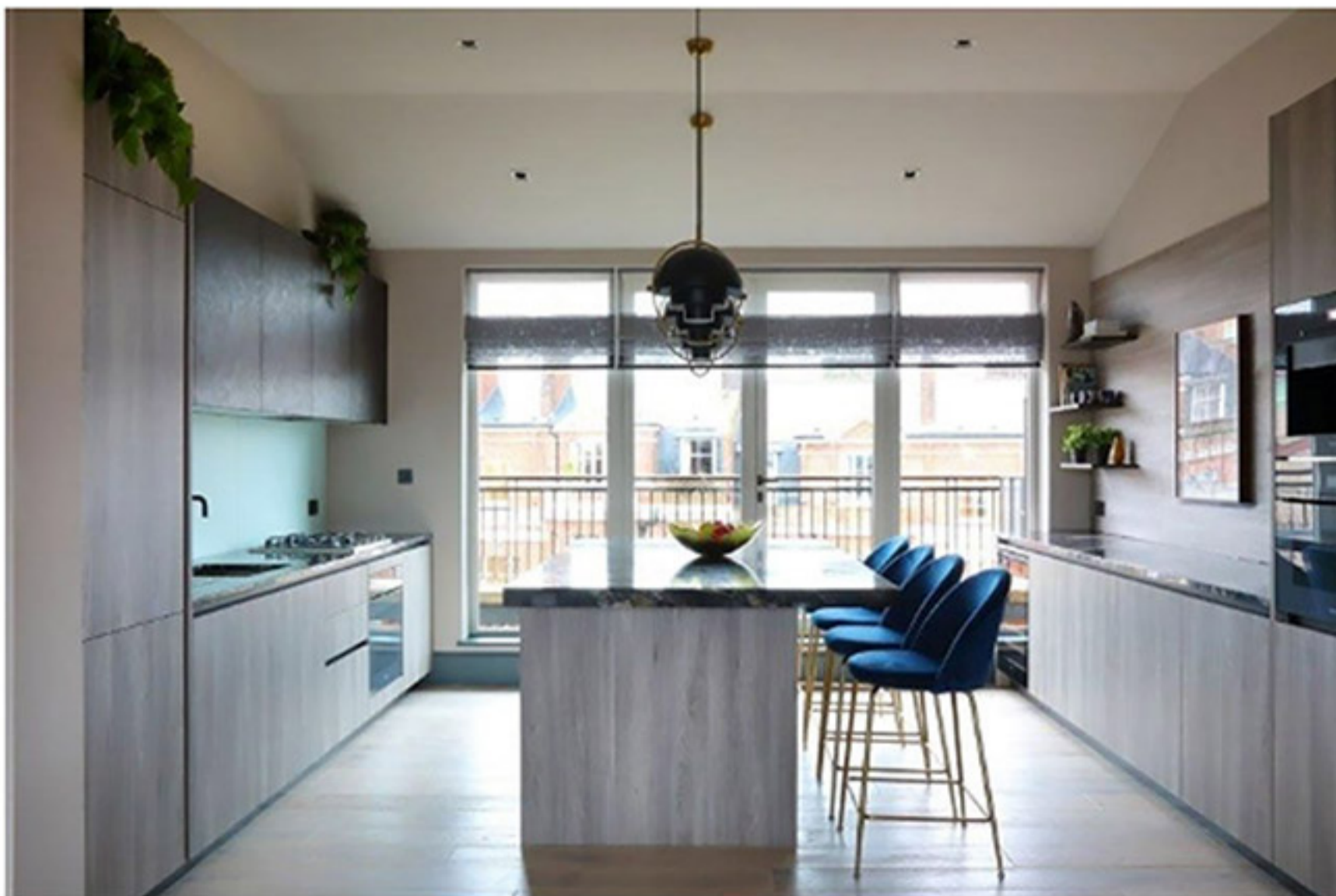




The redesign included the addition of a new cloakroom that indulged bold and contemporary black, white and pink tones, highlighted by walls covered with terazzo wallpaper that is further enhanced by black ribbon detailing along the marble floor. In the bathroom, the flooring is contrasted by the rough surface of the granite sink which elevates the design of the space.



Underfloor heating and new wood and carpet flooring were also added throughout the property, as was a new lighting design to bring a warm glow to the home.



Finally, styling remarkable pieces was a significant aspect of the penthouses revamp, which was developed around works of modern art in order to add character to an already bold and luxurious space. The penthouse now boasts a collection of works by Banksy, Anish Kapoor and Kadar Brock.